



OLF0615 / OLH0615

6.4" AOT LCD, LED Backlight 1000nits,VGA

6.4" AOT panel, built-in 1000 nits high bright and advanced optical bonding technology (AOT). Utilizing AOT technology; OLF/OLH displays overcome optical challenges for the LCD user. In a wide assortment of applications, high ambient lighting conditions result in a 'washed out' display. Commercially available LCD displays do not offer enough brightness to make the display truly readable or in other high ambient light environment. The exclusive glass bonding process from Litemax results in a reduction of ambient light reflections truly tops out any other display enhancement technologies. Suitable for military, tablet, ruggedized PC, kiosk, advertising, POS, marline, transportation, gaming, gas pump.

Key Features

- Sunlight Readable
- Enhance Contrast Ratio, Reduce Reflection
- LED Backlight
- High Shock
- Vandal-Proof, Vibration Absorbed
- Against All Weather, no Foggy Screen
- Low Power Consumption
- Wide Temperature. Range (-20°C~60°C)
- Wide Dimming
- Life Expectancy (70,000hrs)



Specifications

V2

Model No.	OLF0615	OLH0615
Description	6.4" AOT LCD, LED Backlight 1000nits,VGA	
Display Area (mm)	129.6 x 97.4 mm	
Brightness	1000 cd/m2	
Resolution	640 x480 (VGA)	
Contrast Ratio	400 : 1	
Pixel Pitch (mm)	0.2025(H) x 0.203(V)	
Viewing Angle	120°(H), 95°(V)	
Display Colors	262K colors	
Response Time (Typical)	40ms (Typical)	
Sync	TTL	
Power Consumption	11W	
Dimensions (mm)	178.8x126.8x22.3	
Weight (Net)	340g	
LED Driving Board	LID 06A01	
Control Board (Optional)	<input type="checkbox"/> AD5621G <input type="checkbox"/> AD5621GD <input type="checkbox"/> AD5766GDVA	
<input type="checkbox"/> AD5621G	VGA	
<input type="checkbox"/> AD5621GD	VGA+DVI	
<input type="checkbox"/> AD2662GDVAR	VGA+DVI (Optional S-Video/ Component / Audio)	
F / R Control Button	<input type="checkbox"/> 5 Key <input type="checkbox"/> 4 Key	
<input type="checkbox"/> 5 Key	Power Switch, Menu, Select (+,-), Auto	
<input type="checkbox"/> 4 Key	Power Switch, Menu, Select (+,-),	
OSD Menu	Brightness, Contrast, H/V Position, Color, Phase, Clock...	
Optional	<input type="checkbox"/> Touch Screen	

Specifications are subject to change without notice.

All brands or product names are trademarks or registered trademarks of their respective companies.

OLF= AOT Panel+ LED Driving Board

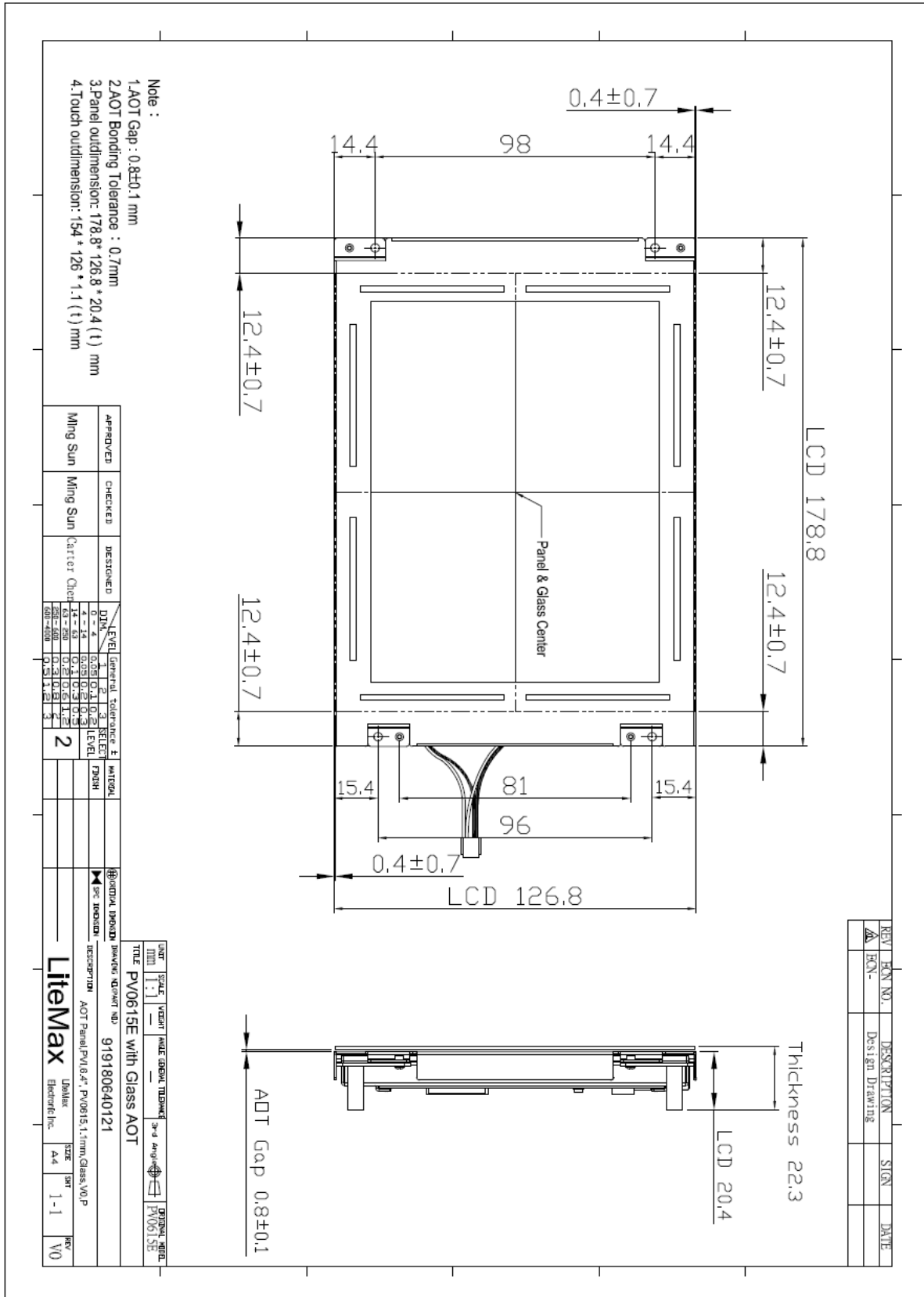
OLH= AOT Panel+ LED Driving Board+ Control Board



Mechanical Drawing

Outline Dimensions

Unit:mm





Ordering Information

Model Name	Description
OLH0615-EGN-B01	6.4",1000nits,VGA,AOT,AR glass.LID06,AD5621GD,V01
OLH0615-EGN-C01	6.4",1000nits,VGA,AOT,AR glass.LID06,AD5766GDV,V01

Optional Accessories

Part Number	Description
840612051100	ADAPTER.12V.5A.60W.EA1050A,P
810618301010	CABLE.POWER.AC.1830mm USA type
810618301090	CABLE,POWER,AC,1830mm Europe type
810618301050	CABLE.POWER.AC.1830mm UK type
810618301170	CABLE.POWER,AC,1830mm Australia type
810618301030	CABLE.POWER.AC.1830mm Japan type

